

An aerial photograph of a tropical landscape. The scene is dominated by a dense field of palm trees on a lush green lawn. A paved road curves through the middle of the image, with a small white van driving along it. The overall atmosphere is serene and tropical.

AURORA

the Explorer

TABLE OF CONTENTS

<i>THE KEY</i>	3
<i>PETROL TANK</i>	3
<i>FRESHWATER TANK</i>	3
<i>GREY WATER TANK</i>	5
<i>WATER PUMP</i>	6
<i>TROUBLESHOOTING THE WATER PUMP</i>	7
<i>HOT WATER HEATER</i>	8
<i>INVERTER</i>	9
<i>CONNECTING POWER TO THE MAINS</i>	10
<i>CHARGING THE CABIN BATTERY (NOT THE ENGINE BATTERY)</i>	11
<i>SOUNDBAR</i>	11
<i>MAIN OVERHEAD LIGHTS</i>	12
<i>BEDROOM SPOTLIGHTS</i>	12
<i>AWNING</i>	13
<i>CHECKLISTS</i>	14
<i>ENJOY YOUR TRIP!</i>	14

THE KEY

There is a small ball-hook as you enter from the side door on your right where you can hang the key. When you're inside for the night use the alarm to lock the van BUT REMEMBER TO TURN THE ALARM OFF in the morning before you open any door otherwise the alarm will go off.

PETROL TANK

The van takes diesel. The tank mouth is located next to the passenger side door and the door needs to be open to allow the tank cover to open. Please ensure the tank is full when returned.

FRESHWATER TANK

The van is equipped with a 100l freshwater tank and a 30l grey water tank. The hose cupboard is in the rear garage (Figure 1 & 2). The flow meter indicator is on the back wall in the driving cabin (Figure 3).

Use the blue hose to draw potable water into the freshwater tank that services washing, cooking and showering. There are two lengths of blue hose – 10m and 20m. In the accessories bag you will find all the connections as well as a joiner if you need to join the two hose lengths.

The filling nozzle for the freshwater tank is located beneath the driver's door (Figure 4). Slide the cap back to remove it then place it on the ground (it will help to remind you to pop it back on). Connect the blue hose to the nozzle and connect the other end of the hose to a nearby tap and turn to full. Please ensure you only use potable water when filling the freshwater tank.

DO NOT USE DUMP POINT TAPS TO FILL THE FRESHWATER TANK

If the tank is empty it will take a good five minutes to fill (more if it's a slow tap flow). When you see water flowing out from the rear of the tank on the driver's side (this is called the overflow) it means the tank is now full and you can turn off the tap.

Disconnect the hose at both ends and make sure you have drained the hose completely of any surplus water so it doesn't leak inside the hose cupboard. Remember to collect any tap connectors you used and put them back into the bag (these are easily forgotten). Replace the nozzle cap back on the freshwater tank.

You can now set the Flow Meter to zero so you have an indication of the tank water level. Press the button on the right side and hold down for 10 seconds. The screen will flash red/purple and reset to zero.

Note: There is a 10l jerry can in the garage in case of an emergency and you can also use it for (outdoor) shower water with the Joolca Hot Tap.



Figure 1 / Hose Cupboard



Figure 2 / Hose and Accessories



Figure 3 / Meters

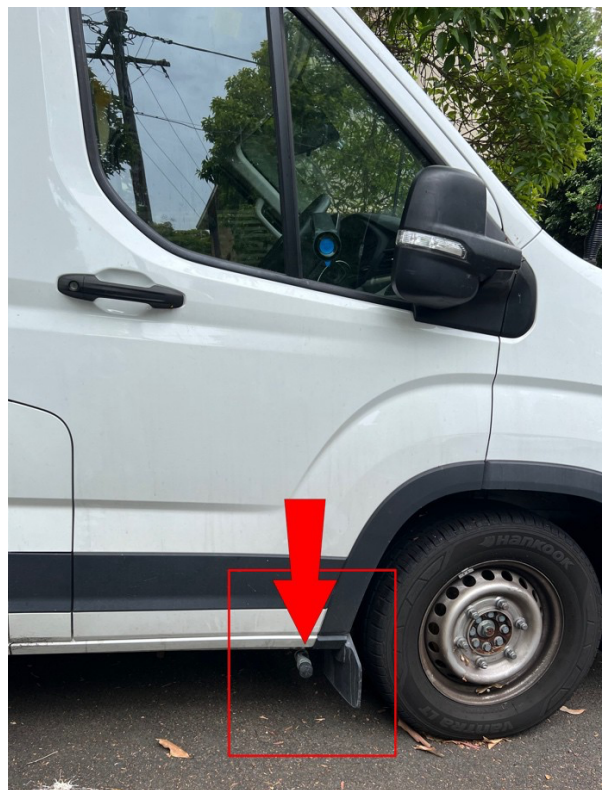


Figure 4 / Freshwater Tank Nozzle

GREY WATER TANK

The grey water tank is located underneath the van (Figure 5) and accessed from the passenger side before the rear wheel. You will see an orange tap under the tank at the rear end (Figure 6) this is to open the tank for dumping. When the tap is in line with the tank it means the tank is open and grey water will flow out, across means it is closed. If you are using the kitchen sink and the water starts to backwash through the plug it means the grey water tank is full and needs emptying.

Use the green hose stored in the hose cupboard and connect it to the greywater tank switch tap and lead the hose to the dump point ground hole and open the grey water tap to empty the tank. Wait until all water has been released then disconnect the hose and put all parts back into the storage cupboard.

Some campsites indicate on their website when you are permitted to leave the grey tank open to allow it to release as you use it. Please don't mix the hoses as it will create a serious hygiene issue for everyone.



Figure 5 / Grey Tank

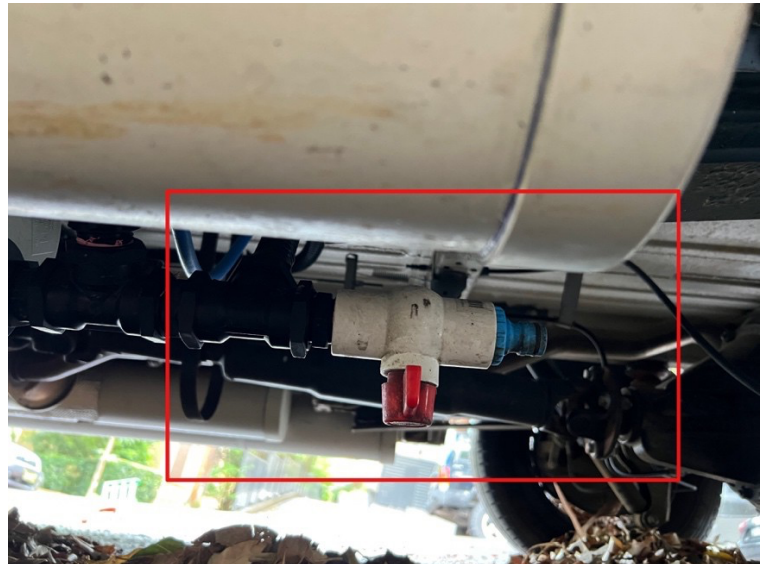


Figure 6 / Grey Tank Tap (this is closed, turn clockwise to open)

WATER PUMP

The Joolca blue water pump services the kitchen tap, the indoor shower and the outdoor shower and is located underneath the kitchen sink (Figure 8). There is a black switch at the front of the unit (Figure 9), pressing it to the left turns pump on and right is off. It is important that you turn the water pump off when not using it for long periods of time to prevent air bubbles getting trapped, this can cause the motor to start on its own and burn out the engine.

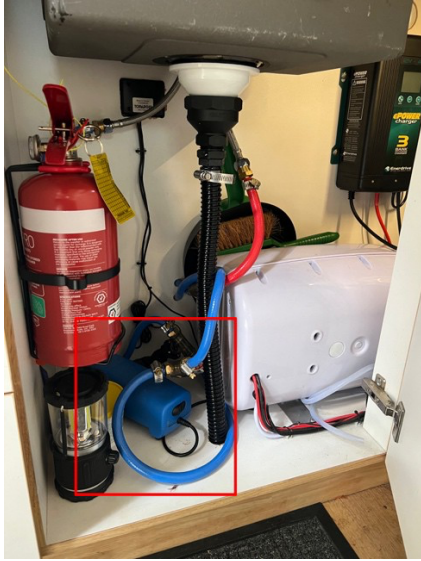


Figure 7 / Water Pump

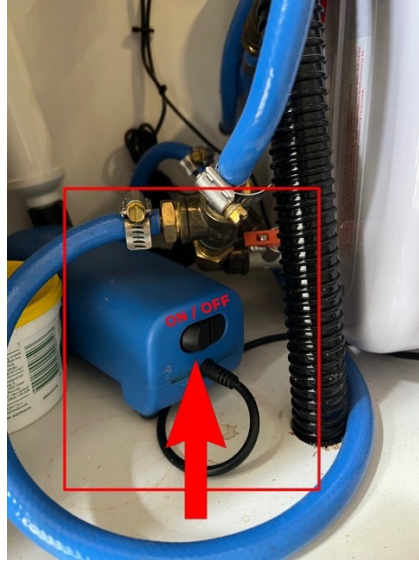


Figure 8 / Power Switch

To use the indoor shower (Figure 10) turn the water pump on and use the shower taps accordingly. Remember the shower water will run into the grey water tank so make sure you have either enough room in the tank or open the grey tank tap to open to allow the water to be released.

See the Indoor Shower Instruction Video on the website to see how to set the shower up.



Figure 9 / Indoor Shower

To use the outdoor water connection at the rear of the van turn the water pump on and turn the rear switch underneath the rear tap (Figure 11). If the shower head is not connected at the rear the water will immediately start to run out of the nozzle (Figure 12). If the shower head is connected you use the on and off switch on the actual shower head to open the water flow.



Figure 11 / Rear Nozzle

TROUBLESHOOTING THE WATER PUMP

If you turn water pump on and the motor instantly starts up before you have opened any water it means there is an air bubble in the pipes. While the pump is still running, turn the kitchen tap on and allow the water to run for around 10 seconds (or until you hear the regular flow starting to kick in) and then turn off the tap and the water pump. The water pump should wind down as normal.

This tends to happen if you had turned on the tap before you turned on the water pump, but you don't realise until this happens.

HOT WATER HEATER

The white unit under the kitchen sink is the hot water heater (Figure 13). To get relatively quick hot water turn it on via the inverter which means first turning the inverter on. The inverter is located on the rear wall of the driving cabin (for more details the inverter see the link on the website or read below) then turn the switch that is located on the hot water heater unit to on (Figure 14). The water heats up relatively quickly and stays hot for several hours after turning off. To use less power use the 12v switch on the cupboard wall (Figure 15) thought it will take longer to heater up. Remember to turn the heater off when finished (along with the inverter) as they will continue to draw power.



Figure 12 / Hot Water Heater

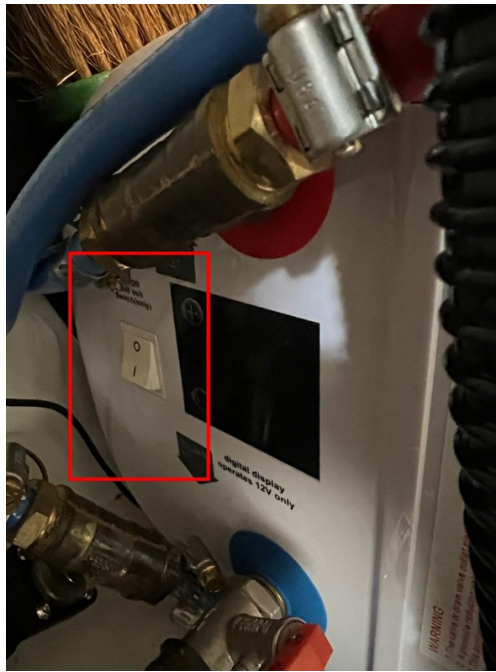


Figure 13 / Power through Inverter

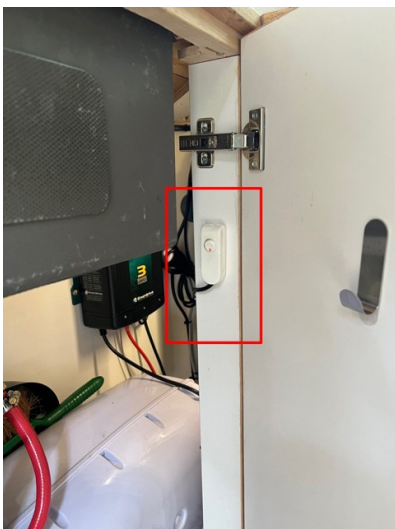


Figure 14 / 12v Power Switch

INVERTER

The Renogy 3000w inverter is mounted inside the electrical cupboard (Figure 16) with the main switch located on the display unit board (now inside the cabin above the kitchen). The inverter powers all 240v appliances and needs to be turned on for them to work. However, only turn the inverter on when you need to use a 240v appliance as it draws a significant amount of power on its own (so don't turn it on and leave it on just in case you need something as you'll discover you have significantly reduced your power supply).

You can access the inverter switch from the kitchen by reaching over into the cabin and switching it up toward you. The inverter powers the induction cooktop, the power points behind the oven (Figure 18) and the power point next to the bed (Figure 97) along with the water pump and the hot water heater. The lights and fridge are 12v so do not need the inverter turned on to work. There is also a double USB port at the end of the bed (12v but slow to charge).

Some of the inverter information has been superseded – a red isolator switch has been installed inside the electrical cupboard and the display screens for battery and flow meter along with the switch for inverter (Fig 16) is now inside the cabin above the kitchen. The inverter has been set up so the only thing that needs to be turned on and off is the red isolator switch. Turning it left toward + turns it on, right toward negative turns it off. The 300W inverter box itself is permanently on neutral and the inside cabin inverter switch is always on – neither of them will have any impact on power unless you turn the isolator switch to on (+). There is no need to touch anything other than the red isolator switch.



Figure 15 / Inverter



Figure 16 / Inverter Switch (middle)



Figure 17 / Power Board & USB Ports

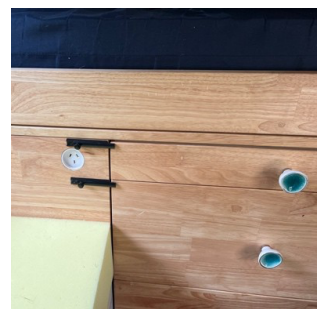


Figure 18 / Bedroom Plug

CONNECTING POWER TO THE MAINS

The power board and leads that connect the van to mains power are stored behind the driver seat in the front cabin (Figure 20). There is a 10amp and 15amp extension lead (orange). There is a white power board with two black plugs in it. Do not remove them - one is the inverter and one is the battery charger.

When you plug into the mains you can run off the mains power instead of using the inverter to power 240volt appliances and this means no draining of the cabin battery PLUS you charge the battery at the same time.

If staying at a caravan park you will need the 15amp extension lead (most powered sites used 15amp outlets). Plug the white power board lead into one of the outlets of the orange 15amp power box and plug the power box main lead into the camps' power.

If connecting to the mains of a residential home you will need to use the 10amp extension lead. Plug the power board lead into the 10amp extension lead and connect to the house mains.

Make sure the two black plugs switches are turned on.



Figure 19 / Equipment to Connect to Mains

CHARGING THE CABIN BATTERY (NOT THE ENGINE BATTERY)

The 40amp battery charger is mounted on the far wall inside the electrical cupboard (Figure 21). It is plugged into the power board located in the front cabin. Follow the 'Connect to the Mains' section to charge the cabin battery when you have access to power. The cabin battery will also charge when the engine is running and via the solar panels. The solar panels will not charge if they are in contact with anything (eg. tree branches)



Figure 20 / Battery Charger

SOUNDBAR

The soundbar is mounted under the kitchen cupboard (Figure 21) and the inverter needs to be turned on to use it. The remote control is in the manual sleeve in the third drawer of the bedroom. Connect to the soundbar via Bluetooth.



Figure 21 / Soundbar

MAIN OVERHEAD LIGHTS

The van lighting is split into two halves and both halves are fitted with downlights and dimmers. The switch for the kitchen is at the end of the kitchen counter (Figure 22). The bedroom lights are on the windowsill to the rear right of the oven (Figure 23) along with the LED under cupboard lights.



Figure 22 / Main Lights



Figure 23 / Bedroom Lights

BEDROOM SPOTLIGHTS

There are several battery-operated downlights in the bedroom. The remote control is attached to the overhead panel (Figure 24). The green/red button will turn them all on or off and you can change the vibrancy or set a timer. You can override the remote control by individually pressing each light if you only want certain lights on.



Figure 24 / Bedroom Light

AWNING

The rod for the awning is hanging in the corner of the kitchen nearest to the driver's seat (Figure 25).



Figure 25 / Awning Rod

Please watch the instructional video on the website to see exactly how to open the awning but there are a couple of extra tips here.

Be sure to use the tent pegs (in third drawer of bedroom) to secure the awning legs to the ground. There is a mallet in the rear toolbox. Alternatively you can use the clips that are on the van to secure them diagonally by making sure the leg foot is flush with the clip, sliding it down into the clip and sliding the cover down to secure it (Figures 26 & 27).



Figure 26 / Front Awning Clip



Figure 27 / Rear Awning Clip

If the awning is not secure and the wind picks up IT WILL FLY UP and potentially fold back onto the van roof and damage the solar panels. Please make sure you secure it one way or another.

To wind the awning back in, the side door of the van can't be fully open (the position interferes with the angle and prevents it winding back). Do the reverse of opening it (wind part way, insert the legs and feet back into the track so they are flush and then finish winding in). There is also a link to an instructional video on the website.

CHECKLISTS

There are three checklists on the website to help you to prepare the van for driving, at night and when returning to us.

ENJOY YOUR TRIP!

We hope you enjoy Aurora, she has taken on great adventures and kept us safe and comfortable. If you need anything please call or message 0414 691 228 and I'll respond as soon as I can.

Warmest wishes
Jo and Scarlett (the Dalmatian)